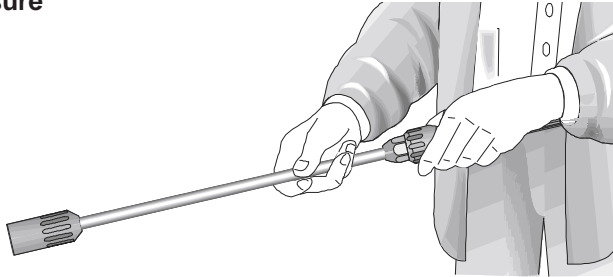
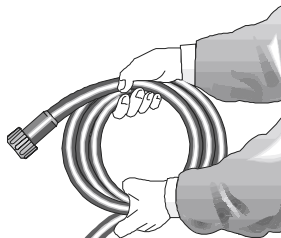


Preparation for use

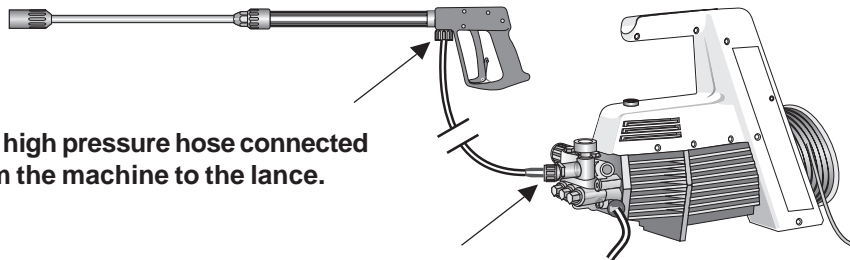
Connect the high pressure lance to the spray gun.



Unwind the high pressure hose without leaving kinks or "nooses" and connect it to the spray gun and pump.
When using extension hoses, use max. 20m high pressure hose, or 2x

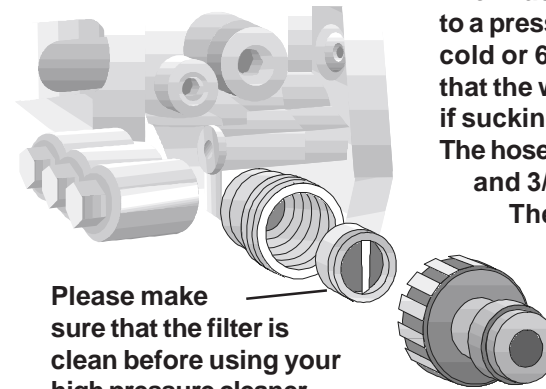


The high pressure hose connected from the machine to the lance.



Preparation for use

The machine can be connected to a pressurised water line with cold or 60 °C hot water. Ensure that the water supply is adequate and if sucking from external source clean
The hose cross section must be at least 1/2" and 3/4" if sucking or low water pressure
The Filter must always be clean.

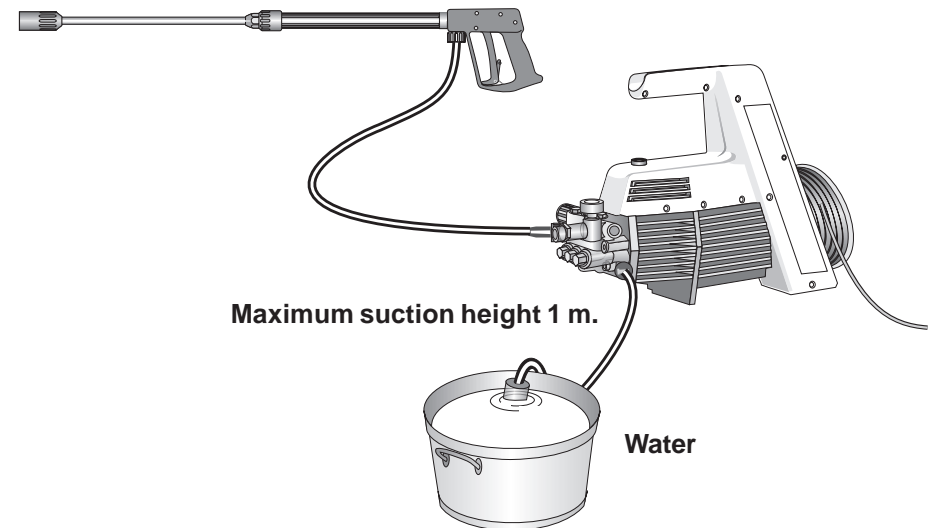


Please make sure that the filter is clean before using your high pressure cleaner.

CAUTION !



When running your high pressure cleaner with hot water of 60 °C raised temperatures occur.



Maximum suction height 1 m.

Water

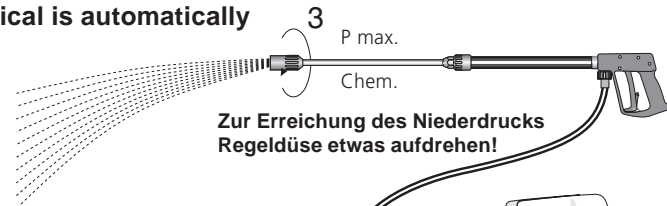
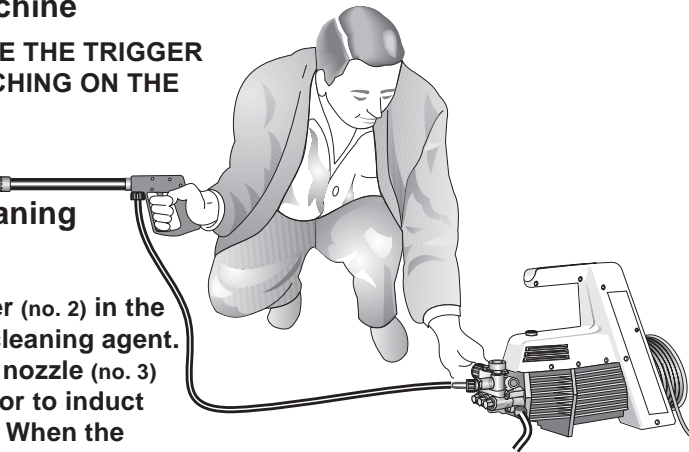
Preparation for use

Starting the machine

YOU MUST SQUEEZE THE TRIGGER GUN WHILE SWITCHING ON THE MACHINE.

When using cleaning agents:

Place chemical filter (no. 2) in the reservoir with the cleaning agent. Open the regulator nozzle (no. 3) to enable the injector to induct the cleaning agent. When the regulator nozzle is closed by turning, the supply of chemical is automatically



Note that you must always comply with instructions provided by the manufacturer of the cleansing agent.
(e.g. concerning safety clothing)

To shut down the pump:

1. Switch off the machine.
2. Cut off the water supply.
3. Open the spray gun briefly until the pressure is released.
4. Apply the safety catch on the spray gun.
5. Remove the water hose and high pressure hose.
6. Drain the pump: switch on the motor for approx 20 sec.
7. Pull the plug from the socket.
8. Winter: store the pump in rooms above 0 C.
9. Clean the water filter.

